

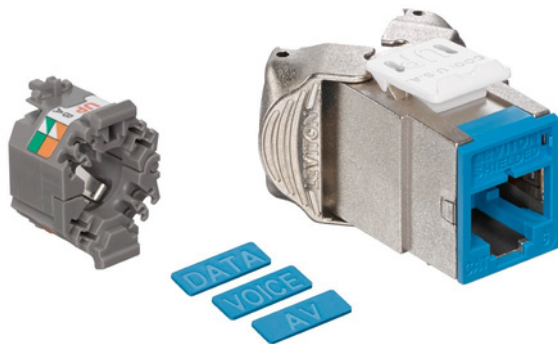
PRODUCT SPECIFICATIONS

61SJK-xx6, ICONS-ICx

ATLAS-X1™ Cat 6 Component-Rated Shielded QUICKPORT™ Jack

APPLICATION

The ATLAS-X1 Cat 6 Component-Rated Shielded QUICKPORT Jack supports 1000BASE-T networks. The shielded jack provides superior alien crosstalk (AXT) suppression and protects critical data from potential EMI/RFI (electromagnetic interference/radio frequency interference). The jack is part of a complete ATLAS-X1 Cat 6 shielded system, ideal for government, health care, manufacturing, transportation, gaming, and other environments where EMI/RFI and/or security may be a concern.



SPECIFICATION

The jack shall meet or exceed the requirements for channel and component-level electrical transmission performance as described in ANSI/TIA-568.2-D (Cat 6), ISO/IEC 11801-1 (Class E), and EN 50173-1 (Class E). The jack shall be compliant with ANSI/TIA-1096-A, c(UL)us Listed, and be independently verified for electrical transmission performance and power delivery. The jack shall be encased in a diecast housing to protect from potential EMI/RFI. The jack shall support tool-free termination and re-termination and shall not require a specialized termination tool. The jack wiring shall be universal to accommodate T568A and T568B wiring schemes. The jack shall be available in 13 colors; more than established by the ANSI/TIA-606-C standard. The jack shall be offered in standard and shuttered styles and select jacks shall be supplied with interchangeable icons. The jack shall be compliant with IEEE 802.3 PoE Type 1, 2, 3, 4 (100 watts max).

DESIGN CONSIDERATIONS

- Fits all QUICKPORT applications in patch panels, faceplates, and surface-mount boxes
- Can be used to terminate all types of shielded cable
- To identify ports, use different colored modules and icons for each application (13 ANSI/TIA-606-C compatible colors)
 - Robust housing and internal shutter protects the connector in harsh environments

FEATURES & BENEFITS

- Independently tested and guaranteed to exceed all component, permanent link, and channel margins
- Patented Retention Force Technology™ (RFT) protects against time damage and increases system longevity
- For Power over Ethernet (PoE), RFT maintains contact force between plug and jack, preventing arcing from intermittent disconnects
- Shielding provides EMI/RFI protection, signal isolation, and excellent alien crosstalk (AXT) suppression
- Unique design supports tool-free termination and re-termination and requires no specialized termination tool
- Short jack design supports a wider range of applications (e.g. shallow boxes, enclosures, bend radius, etc.)
- Terminates from 26 to 22 AWG solid or stranded conductors for use on various cable types
- Robust IDCs can withstand 20 re-termination cycles and jack contacts are tested for 3,000 plug-mating cycles to ensure system longevity
- Available in 13 ANSI/TIA-606-C compatible colors
- Select jacks available with interchangeable icons (voice, data, A/V, and blank, color-coded to match the jack face) for easy identification and tracking of data, voice, or other functions
- Jack with internal shutter protects against dust and debris
- Solid metal body dissipates 53% more heat than traditional plastic, minimizing damage from excess heat in PoE applications
- Fine geometry prevents arcing damage where plug and jack make contact

STANDARDS & REGULATIONS

- ANSI/TIA-568.2-D (Cat 6)
- ISO/IEC 11801-1 (Cat 6)
- EN 50173-1 (Cat 6)
- ANSI/TIA-1096-A (formerly FCC Part 68)
- UL 2043 Plenum Certified
- IEC 60603-7 (includes IEC 60512-5-2)
- IEC 60512-99-002
- c(UL)us Listed (UL 1863)
- IEEE 802.3 PoE Type 1, 2, 3, 4 (100 watts max)
- Cisco UPOE, UPOE+ (90 watts max)
- Power over HDBaseT™ PoH (95 watts max)
- ETL verified to meet the IEC 60512-99-002 standard for support of IEEE 802.3 Type 4 PoE (100-watt) applications
- RoHS 3

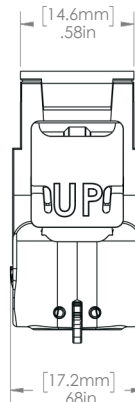
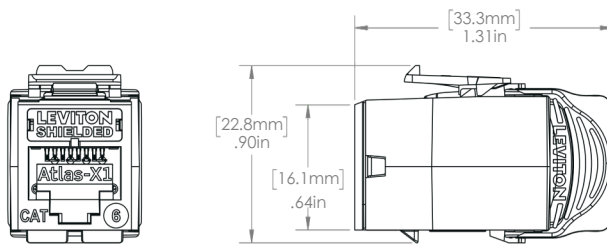
61SJK-xx6, ICONS-ICx

PRODUCT SPECIFICATIONS

61SJK-xx6, ICONS-ICx

MECHANICAL SPECIFICATIONS

Dimensions: See below
 Materials: **Jack Body:** Die-cast zinc
Spring-Wire Contacts:
 High-quality, copper-based alloy, plated with 50 microinches of gold for lowest contact resistance and maximum life
 Temp. (Storage): -40 °C to +70 °C (-40 °F to +158 °F)
 Temp. (Installation): Refer to cable installation temperature
 Temp. (Operating): -10 °C to +60 °C (+14 °F to +140 °F)
 Humidity (Max.): 95% relative humidity, non-condensing



COUNTRY OF ORIGIN

USA and Mexico (Contact Customer Service for details)

WARRANTY INFORMATION

For Leviton product warranties, go to Leviton.com/NS/Warranty

61SJK-xx6, ICONS-ICx

PART NUMBERS

Description

Standard Jack

Jack with Internal Shutter

GREENPACK™ 12-Pack Standard Jack

ATLAS-X1™ Cat 6 Component-Rated Shielded QUICKPORT™ Jack, white	61SJK-RW6	61SJK-SW6	61SJK-CW6
ATLAS-X1 Cat 6 Component-Rated Shielded QUICKPORT Jack, light almond	61SJK-RT6	61SJK-ST6	—
ATLAS-X1 Cat 6 Component-Rated Shielded QUICKPORT Jack, ivory	61SJK-RI6	61SJK-SI6	—
ATLAS-X1 Cat 6 Component-Rated Shielded QUICKPORT Jack, yellow	61SJK-RY6	61SJK-SY6	—
ATLAS-X1 Cat 6 Component-Rated Shielded QUICKPORT Jack, orange	61SJK-RO6	61SJK-SO6	—
ATLAS-X1 Cat 6 Component-Rated Shielded QUICKPORT Jack, crimson	61SJK-RC6	61SJK-SC6	—
ATLAS-X1 Cat 6 Component-Rated Shielded QUICKPORT Jack, dark red	61SJK-RR6	61SJK-SR6	—
ATLAS-X1 Cat 6 Component-Rated Shielded QUICKPORT Jack, purple	61SJK-RP6	61SJK-SP6	—
ATLAS-X1 Cat 6 Component-Rated Shielded QUICKPORT Jack, blue	61SJK-RL6	61SJK-SL6	—
ATLAS-X1 Cat 6 Component-Rated Shielded QUICKPORT Jack, green	61SJK-RV6	61SJK-SV6	—
ATLAS-X1 Cat 6 Component-Rated Shielded QUICKPORT Jack, gray	61SJK-RG6	61SJK-SG6	61SJK-CG6
ATLAS-X1 Cat 6 Component-Rated Shielded QUICKPORT Jack, black	61SJK-RE6	61SJK-SE6	61SJK-CE6
ATLAS-X1 Cat 6 Component-Rated Shielded QUICKPORT Jack, brown	61SJK-RB6	61SJK-SB6	—

Color-matched icons (ICONS-ICx) can be ordered separately in 72-quantity packs.

Bulk wire managers (AXSJK-BGM) can be ordered separately in 10-quantity packs.

x = icon color



For further support information, visit leviton.com/ns/support