



RWL Advanced Solutions

Representing the leading Information Technology brands in Europe.



Fire Resistance Products

D U B L I N | L O N D O N | A M S T E R D A M

Index

Fireproof Box BB	3
Expanding Fire Sponge Slabs, Stones and Stops	6
Strangle Belt type WB Plus	8
Sealing mastic and Pyro putty	9
Cable Cleats	10
Defem Mesh Tray	12

Our brand partners

We are proud of the lasting relationships that we have created, nurtured, and maintained with our clients who we regard not just as our clients but as our partners.

With decades of experience we understand the value of continually being at the cusp of innovation, training and upskilling our team on an ongoing basis and working collaboratively with our partners

PANDUIT®

Panduit develops smarter, scalable network infrastructure and industrial electrical wiring solutions that unlock the full potential of your business.

**wibe®
group**

Bringing together four of the world's leading cable management brands to offer a complete, innovative solution of cable ladders, cable trays and mesh trays.

IBMO®

IBMO specializes in fire retardant, gas, and water tight seals and penetrations. At IBMO, service, quality and working with the customer to find the best solution are paramount.



OUR STORY

RWL across EMEA is driven to not only be leading distributor within the Infrastructure Technology / Networking sector but are also the preferred partner with both our clients and manufacturers.

RWL have a team of highly trained and experienced professionals who all have a passion for the IT industry. From our locations in Dublin, London and Amsterdam, our team push to consistently deliver a world class service, the quality of which our company ethos has been built upon – having the best people, delivering world class performance, complete every action with Integrity, having the highest possible standards and nurturing partnerships.



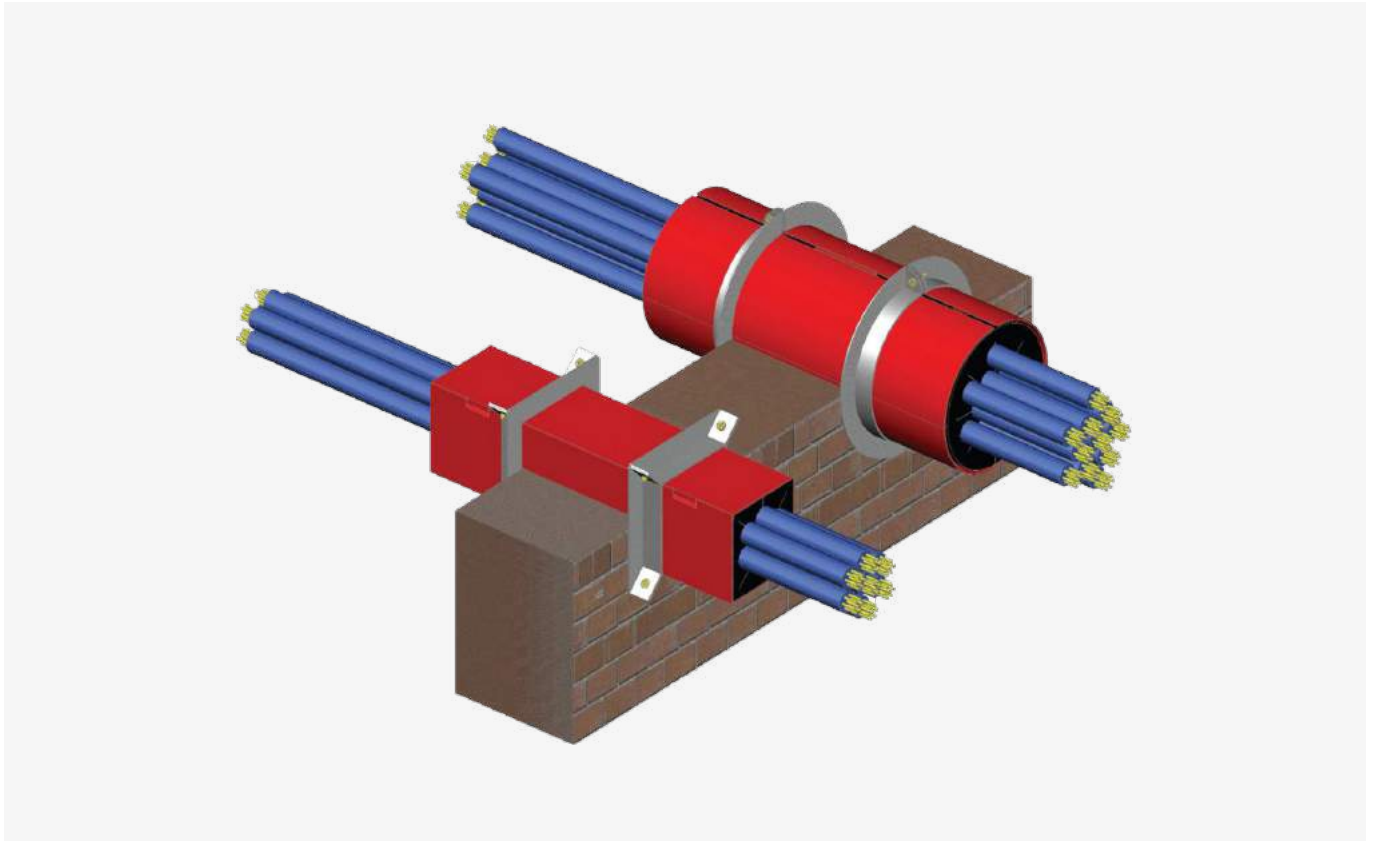
OUR FUTURE

We aim to continue world class service delivery to our clients and partners throughout EMEA. We endeavour to work closely with our partners to empower our clients to secure projects in all market sectors i.e. Enterprise and Data Centres.

We will achieve this by committing to continually invest in our teams training and continuous learning programmes, by understanding the importance of innovation and change and staying on the pulse of market / manufacturer advancements and finally by leveraging the key strengths that our company strategy has implemented and that has led us to be a market leader in the IT Distribution Sector across EMEA.

Fireproof Box BB

Industrial, Building, Marine, Offshore



The IBMO Fireproof Box offers the ultimate solution in case of transitioning cables through flexible, concrete, brick-wall or floor.

- Fireproof during building process
- Easy installation
- Fireproof till 120 minutes
- For use in floors and walls
- Installing extra cables very easy
- Cable fill can be up to 100%.
- Maintenance free
- To use with or without flence

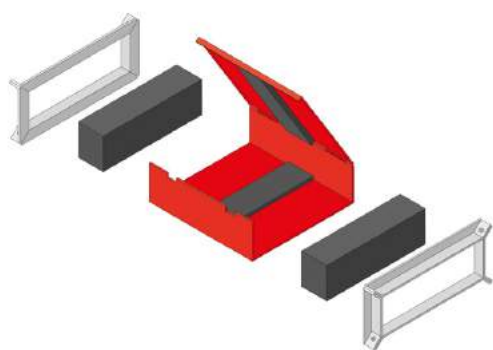


BB350 Box installed with flence

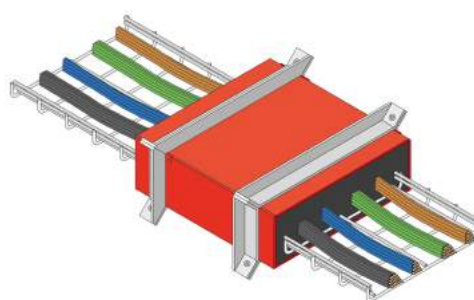
If required boxes can be made to any required width from 125mm wide to 1100mm wide x 125mm high.

Art no.:	Discription:	Size in mm:	Lenght in mm:	Type:
RWL - BB65	Fireproof box 65	65x65	254	Square
RWL - BB102	Fireproof box 102	102x102	254	Square
RWL - BB250	Fireproof box 250	250x125	254	Rectangle
RWL - BB350	Fireproof box 350	350x125	254	Rectangle
RWL - BB450	Fireproof box 450	450x125	254	Rectangle
RWL - BB550	Fireproof box 550	550x125	254	Rectangle
RWL - BB1100	Fireproof box 1100	1100x125	254	Rectangle
RWL - BBR50	Fireproof box round 50	Ø 50	254	Round
RWL - BBR102	Fireproof box round 102	Ø 102	254	Round

Square Boxes can be grouped together in 2's; 3's; 4's or 6's which is described as a two-plex; three-plex; four-plex or six-plex installation.



Open

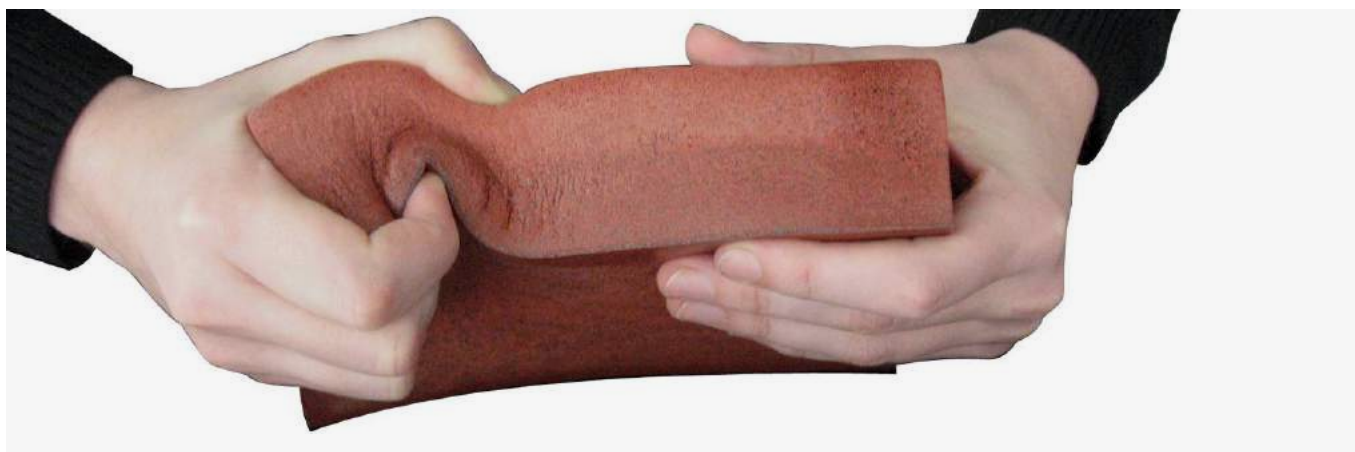


Closed

All products conform European norm NEN-EN 1366-3

Expanding Fire Sponge Slabs, Stones and Stops

The IBMO Expanding fire sponge slabs, stones and stops are specially developed for single and multiple cable entrances. All components are halogen free, and applicable in floor and wall mounted situations. When exposed to fire, the foam expands to 100 % its original volume so cracks and openings automatically will be sealed and eliminates further spread of smoke and fire.



Specifications

Material	IBMO flexible pre carbon - foam
Color	Red
Density	240± 10kg.m ³
Expanding properties in case of fire	More than 100%
Fire test	Tested according to the European rules and regulations EN 1366-3;2009 together with the NEN 6069:2005. firetest 2007. Test 120 min.

Expanding fire safe foam are very easy to handle, no special engineering is needed, quick to install, easy to maintain and gives the installer simple access to add or remove cables in a later stage without disassembling the conduit opening.

Expanding fire sponge slabs



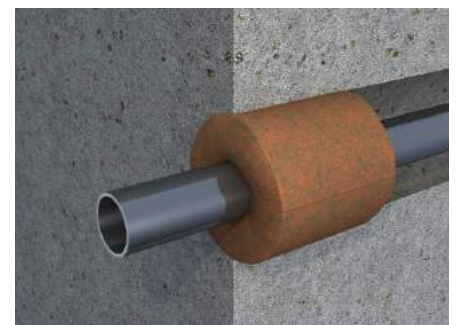
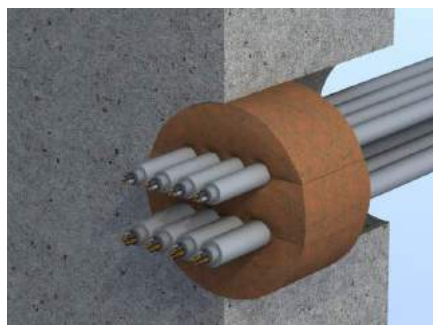
Art. no.:	Size in mm:
RWL - FC 12	1000x150x25

Expanding fire sponge slabs



Art. no.:	Size in mm:
RWL - NL01	220x150x50

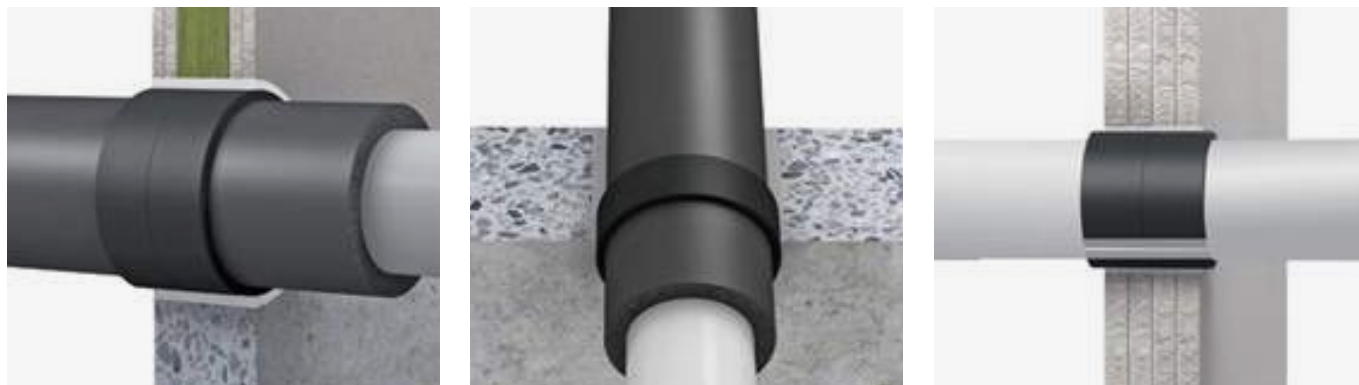
Expanding fire sponge slabs



Art. no.:	Opening mm:	Diameter tolerance D1/D2 mm:	Height in mm:
RWL - FS 01	50	55/70	70
RWL - FS 02	80	85/100	70
RWL - FS 03	100	105/120	70
RWL - FS 04	125	130/145	70
RWL - FS 05	150	155/170	70
RWL - FS 06	200	205/220	70

Strangle Belt type WB Plus

The IBMO Strangle Belt is a perfect replacement for the IBMO Strangle Collar. If there is enough space to place the Belt it will save you drills, anchor bolts and most important gain valuable installation-time!



Art. no.:	Description:	Size in mm:	Length in mm:	Type:
WB Plus	Strangle Belt Plus	25 mtr x 50mm x 2mm	25.000 mm	Role

Classified and tested according to **EN 13501-2** as EI 60-240 minutes.

Tested for many type of plastic pipes such as, PVC, PE, PP, Alpes Duo, Uponor, Silent Pipes and Multi layer pipes.

IBMO Sealing Mastic and Pyro Putty

The IBMO Sealing Mastic is the perfect solution for sealing of pipes or cables, applicable in new construction and maintenance programs. Adding or removing pipes / cables is very easy with the IBMO Sealing Mastic. The sealing mastic is available in carton tubes of 600ml, packed six of each to the carton.



Sealing Mastic

Art. no.:
RWL - OP 600
Tested according EN 13501-2: 20003



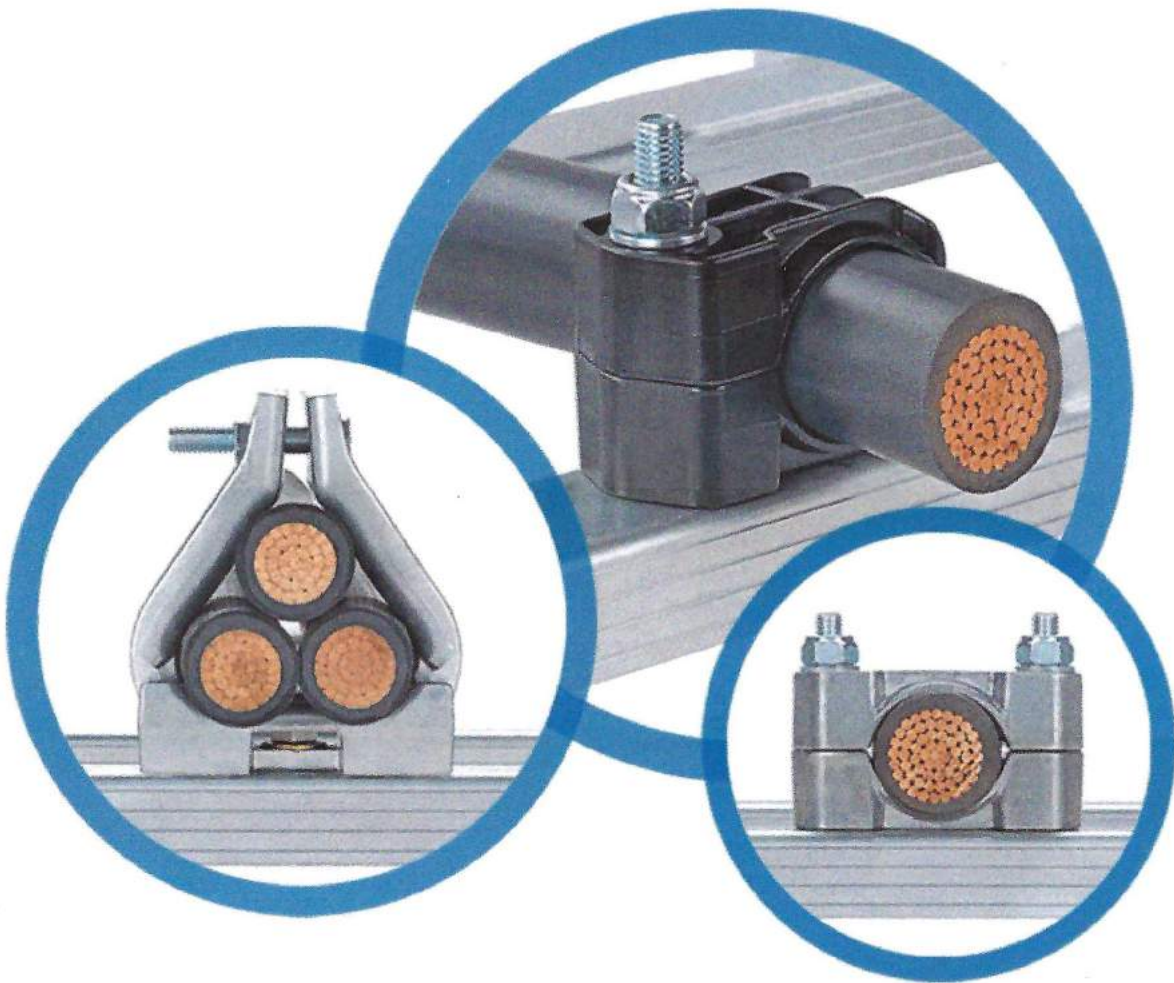
IBMO Pyro Putty
(In colors Grey to Black)

Art. no.:	Fire Class:	Application temperature:	Temperature resistance:	Shelf Life
RWL - BW 310	A60, A30, A15, A0	+5°C till 40°C	-50°C till 150°C	12 Months

Cable Cleats

For power distribution cables laid on cable tray or strut, damage occurring from a short circuit fault is a serious but often overlooked and misunderstood issue. A short circuit fault can occur due to breakdown of equipment or conductors from deterioration, insulation failure due to lightning surges or overloading equipment, or something as simple as a vehicle accidentally backing into the cables.

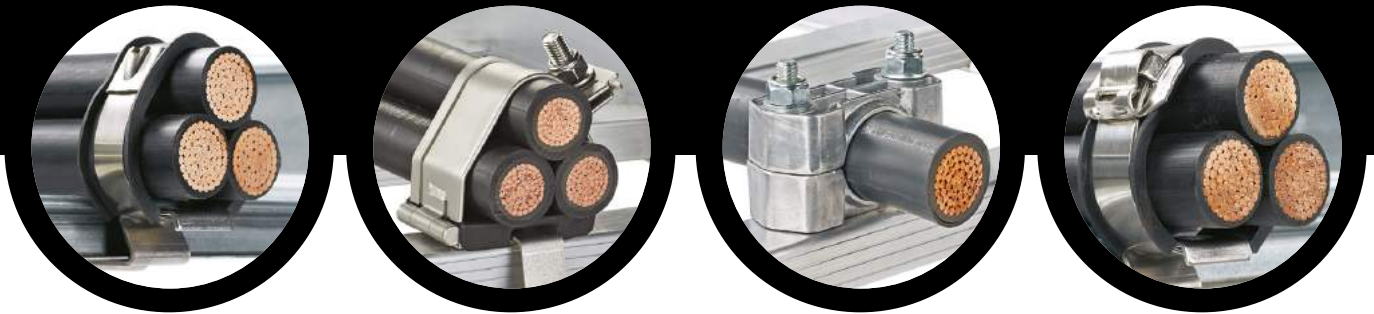
The result is “cable whipping,” an instantaneous and often very violent electromechanical repulsion of cables away from one another, resembling an explosion. This event damages the cable, cable tray, and potentially other equipment nearby. Worst case scenario, people nearby get injured or killed. Cable cleats are tested and specified to restrain power cables during a short circuit fault, providing protection before a circuit breaker can react.



Cable Cleats Advantages

- Engineering expertise and thought leadership
- Award-winning multi-physics software that simulates short circuit forces on our cleats to help determine strength and functionality.
- Product selector app (available now) and web tool provide calculations and cleat part and spacing recommendations at the touch of a fingertip.

100+
Parts!



- A variety of cable arrangements, including single cable flat, trefoil bundle, quad bundle, and multicore.
- Wide range of cable diameters.

Panduit, a trusted Cable Cleat Manufacturer

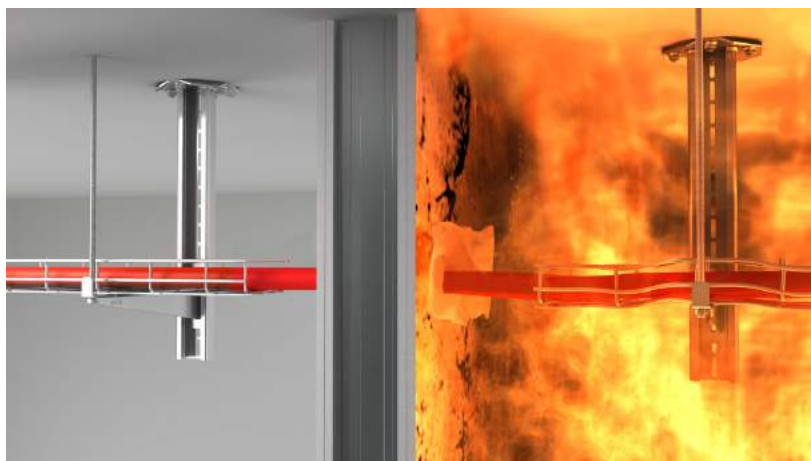
- All cable cleats are tested to the latest and most globally recognized cable cleat testing standard, IEC 61914:2015.
- Offers patented mounting brackets with its strap cleats, providing installation flexibility on a variety of cable tray rung profiles.
- Time and effort-saving mounting brackets for its Stainless Steel Trefoil (CCSSTR) and Aluminum Trefoil (CCALTR) cleats.

Defem Mesh Trays comply to E30, E60 and E90 fire protection

The longer mesh tray installations are resistant to fire, the longer the electric system will be able to operate normally. Defem products with E30, E60 and E90 certification will help to protect life and property in the event of a fire. The well-proven, reliable cable support system will prolong the access to critical emergency services, such as fire suppression systems, emergency lighting, ventilation and other basic installations.

About the test

Defem products have excellent fire resistance properties. You can feel confident when installing Defem in environments requiring, E30, E60 and E90 certification. The Defem products exceeded the fire resistance test, qualifying for the highest level of resistance proposed by this standard – the E90. The trays with accessories were tested for 90 minutes in a temperature of up to **1000°C** without collapsing, with the electrical performance still remaining intact.



During the test
Defem system during the test.



After the test
Defem system after 90 minutes of fire test. The electrical performance is still intact.

Defem Mesh Trays

- High-end, heavy-duty mesh tray range with outstanding mechanical resistance, leading to high values of safe working load
- Can be filled with cables to the top of the tray when fixed onto supports mounted at a distance of up to 2 meters
- Well-rounded edges prevent hand injuries and cable damages
- Reduced installation time with only three needed joining fittings
- Extensive range of supporting material
- Finishes for application in all environments - Electro-zinc, Hot-dip galvanized, AISI304L and AISI316L acid-proof stainless steel
- Accessories such as bends, raisers, reducers, etc. are formed on site from length material elements
- Specially shaped mesh trays for demanding applications
- Compliance with international quality standards such as IEC 61537 and E90 according to DIN 4102-12 for fire resistance
- Stands 90 minutes in a temperature of up to 1000°C.
- The only mesh tray approved by Det Norske Veritas (DNV) for offshore and shipyard use



The Defem mesh trays meet the toughest product standards:

- IEC 61537
- UNE EN 50102
- UNE EN ISO 9227
- DIN 4102-12 for fire resistance E90



Defem is the only mesh tray approved by Det Norske Veritas (DNV) for offshore and ship-yard use.



Stands 90 minutes in a temperature of up to 1000°C.

The Defem mesh trays meet the toughest product standards

- IEC 61537
- UNE EN 50102
- UNE EN ISO 9227

For fire resistance

- DIN 4102-12
- E30, E60 & E90

OUR TEAM



Robert Walsh

Managing Director
rwalsh@rwlas.com



Sean Kirby

Sales Director
skirby@rwlas.com



Ab Vingerling

European BDM
avingerling@rwlas.com



Roger Ball

UK Business Developer
rball@rwlas.com



Scott Smith

UK Channel Director
ssmith@rwlas.com



Joe Reilly

UK Sales Manager
jreilly@rwlas.com

Representing leading manufacturers in the Data and Telecoms market. Providing solutions to clients through an experienced team of individuals with extensive industry experience.



Dublin Office
15 Park West Road,
Park West,
Dublin 12,
D12 Y1T2
T: +353(0)14242414
E: sales@rwlas.com

London Office
Tower 42,
25 Old Broad St,
London,
EC2N 1HN
T: +44(0)2070846219
E: salesuk@rwlas.com

Amsterdam Office
RWL-AS BV
Laarderhoogtweg 18
1101 EA Amsterdam
The Netherlands
T: +31 (0) 88-6066700
E: salesnl@rwlas.com